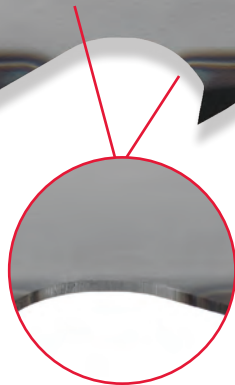


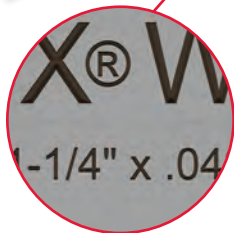


LENOX® WOODMASTER GT™

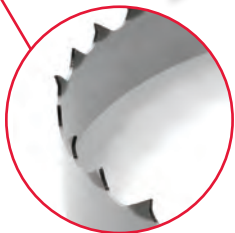
MADE IN USA 1990159 1-1/4" x .042" x 7/8" 34 mm x 1.07 mm x 22mm 10° / 0.022" SIDE SET



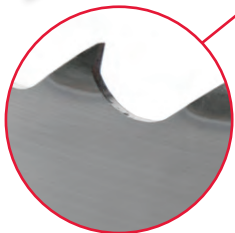
PROPRIETARY BACKING STEEL
High carbon backing steel reduces band breaks and allows multiple sharpenings



LASER MARKED PRODUCT IDENTIFICATION
Key product specifications won't wear off during blade use, retaining pertinent information for sharpening, setting, and re-ordering



PRECISION SET
Cutting face of the set teeth are parallel to the cutting face of raker teeth allowing for efficient cutting, extended blade life and more sharpenings



GROUND TOOTH GEOMETRY
Teeth are ground and induction hardened to keep the blade sharp
Deep gullet design effectively removes sawdust to minimize wavy cutting

WOODMASTER GT™

Precision Ground Carbon Blades for Wood Cutting

EXCELLENT BLADE LIFE ON RESAWS AND PORTABLE SAWMILLS

Teeth are ground and induction hardened to keep the blade sharp

High carbon backing steel reduces band breaks and allows multiple sharpenings

SMOOTH, STRAIGHT CUTS AT PRODUCTION RATES

Deep gullet design effectively removes sawdust to minimize wavy cutting

Durable tooth form cuts efficiently through hard knots

CUTS A WIDE RANGE OF SOFT AND HARD WOODS

Precision set teeth cut a variety of wood types from pine and cedar to oak and maple

Optimized to cut the most difficult wood including seasoned and frozen timber



WIDTH X THICKNESS (IN)	HOOK ANGLE	SIDE SET	KERF (IN)	PRIMARY APPLICATION	TOOTH SPACING	1/2"	3/4"	7/8"	1"
					TPI	2	1.3	1.1	1.0
1 x .035	10°	.016"	.067"	Pallet Resaws/High Dust Removal		◆			
1 x .035	10°	.022"	.079"	Pallet Resaws/General Purpose		◆			
1 x .035	10°	.018"	.071"	Pallet Resaws/High Dust Removal			◆		
1 x .035	10°	.022"	.079"	Pallet Resaws/General Purpose			◆		
1-1/4 x .042	10°	.022"	.086"	General Purpose				◆	
1-1/4 x .042	10°	.022"	.086"	General Purpose			◆		
1-1/2 x .045	10°	.026"	.097"	General Purpose				◆	
1-1/2 x .045	10°	.026"	.097"	General Purpose					◆
1-1/2 x .055	10°	.026"	.107"	General Purpose				◆	
1-1/2 x .055	10°	.026"	.107"	General Purpose					◆

All coils are random length, palletized coils between 375 and 450 feet.



WOODMASTER® C

Carbon Steel Blades For Reliable Performance

DELIVERS STRAIGHT CUTS AT HIGH BAND SPEEDS

Engineered for demanding saw mill and resaw applications

BLADES LAST LONGER AND WEAR EVENLY

One piece carbon steel construction with induction hardened tooth tips

FASTER CUTTING AND INCREASED PRODUCTIVITY

Improved beam strength for high feed rates

WIDTH x THICKNESS	SIDE SET	KERF	TOOTH SPACING	1/2"	3/4"	7/8"	1"
			TPI	2	1.3	1.1	1
1 x .035	27 x 0.90	.0185	.072		◆	◆	
1 x .035	27 x 0.90	.0215	.078		◆	◆	
1-1/4 x .035	34 x 0.90	.0225	.080			◆	◆
1-1/4 x .042	34 x 1.07	.0215	.085		◆	◆	◆
1-1/2 x .042	41 x 1.07	.0215	.085			◆	◆
2 x .035	54 x 0.90	.0275	.090			◆	◆
2 x .045	54 x 1.14	.023	.091			◆	◆



CHIPSWEEP®

Carbon Steel Blades With Proprietary Tooth Geometry

MINIMIZES DUST ON SAWN BOARDS

Unique tooth design reduces or eliminates secondary dedusting operations

CUTS STRAIGHTER AND LASTS LONGER AT HIGHER FEED RATES

Exceptional results in frozen wood

EXTREMELY VERSATILE

Used to cut cants, dry boards, soft and hard woods

WIDTH x THICKNESS		SIDE SET	KERF	TOOTH SPACING	3/4"
INCHES	MM			TPI	1.3
1 x .035	27 x 0.90	.0185	.072		◆
1-1/4 x .042	34 x 1.07	.020	.082		◆





WOODMASTER® B
Precision Engineered Bi-Metal Blades

CUTS FASTER AND LONGER THAN ONE-PIECE CARBON STEEL BLADES
Two-piece steel construction provides excellent blade life

INCREASED HEAT AND WEAR RESISTANCE
Cobalt rich, high-speed steel tooth tips

INCREASED BEAM STRENGTH FOR LONGER FATIGUE LIFE
Durable spring steel backing material

DELIVERS CONSISTENT, RELIABLE PERFORMANCE

WIDTH x THICKNESS INCHES MM	SIDE SET INCHES	KERF INCHES	TOOTH SPACING TPI	TOOTH SPACING					VARI-TOOTH® TPI 5/8
				1/2"	3/4"	7/8"	1"	1-1/4"	
1 x .035	27 x 0.90	.0185	.072						
1-1/4 x .035	34 x 0.90	.0185	.072						
1-1/4 x .042	34 x 1.07	.019	.080						
2 x .042	54 x 1.07	.0215	.085						
2 x .050	54 x 1.27	.020	.090						
2 x .050	54 x 1.27	.021	.092						



WOODMASTER® CT
Carbide Tipped Blades For Optimum Performance

SMOOTH, PRECISE FINISH
Precision ground carbide tooth tips deliver the straightest cuts

ENGINEERED FOR EXTENDED LIFE AND OPTIMAL SPEED
Effectively cuts exotic or difficult to machine wood

IDEAL FOR SPECIALTY WOOD APPLICATIONS
Designed to cut moulding, hardwood flooring, wood siding, paneling and other millwork applications

EXTREME CUTTING RATES. LONGER BLADE LIFE
MAXIMUM PRODUCTIVITY

WIDTH x THICKNESS INCHES MM	KERF INCHES	TOOTH SPACING TPI	TOOTH SPACING				VARI-TOOTH® TPI 5/8
			1/2"	3/4"	.7/1	2/3	
1 x .035	27 x 0.90	.051					
1 x .035	27 x 0.90	.065					
1-1/4 x .042	34 x 1.07	.072					
2 x .035	54 x 0.90	.051					
2 x .035	54 x 0.90	.065					
2 x .042	54 x 1.07	.072					
2 x .042	54 x 1.07	.085					



PALLETMASTER® C
Low Cost, Carbon Pallet Dismantling Blade

VARI-TOOTH® DESIGN IMPROVES BLADE LIFE AND REDUCES VIBRATION
Cuts are straighter and require less force

ONE PIECE STEEL CONSTRUCTION CUTS THROUGH NAILS
Excellent fatigue life and extreme durability

HARDENED TOOTH TIPS SURVIVE AGGRESSIVE APPLICATIONS

WIDTH x THICKNESS INCHES	THICKNESS MM	VARI-TOOTH® TPI 5/8
1-1/4 x .042	34 x 1.07	◆



PALLETMASTER® B
High-Performance, Bi-Metal Pallet Dismantling Blade

BI-METAL CONSTRUCTION DELIVERS BETTER WEAR AND HIGHER HEAT RESISTANCE
Significantly outperforms traditional carbon steel blades

VARI-TOOTH® DESIGN EXTENDS BLADE LIFE AND REDUCES VIBRATION
Longer life against hardened nails and screws

FEWER BLADE CHANGES, HIGHER PRODUCTIVITY
Dismantle more pallets in less time to maximize efficiencies

WIDTH x THICKNESS INCHES	THICKNESS MM	VARI-TOOTH® TPI 5/8
1-1/4 x .042	34 x 1.07	◆

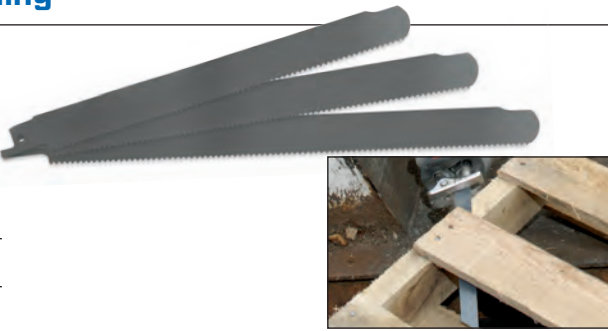


PALLET DISMANTLING RECIP BLADES
High-Performance Cutting For Pallet Refurbishing

ENGINEERED FOR STRENGTH
Specially treated to enhance performance and withstand nail strikes to keep cutting fast

LONG CUTTING LIFE
Patented tooth design and a rounded nose provide long blade life and enable easy access in tight spots

TPI	LENGTH x WIDTH x THICKNESS IN MM	250-PACK PROD NO	APPLICATION
10	8 x 3/4 x .035 203 x 19 x .9	10729810RPC	
10	9 x 3/4 x .035 229 x 19 x .9	1995507	
10	10 x 3/4 x .035 254 x 19 x .9	107301010RPC	



TENSION METER

ENABLES YOU TO CUT LONGER AND STRAIGHTER
Properly tensioned band saw blades perform better

REDUCE BLADE BREAKAGE
Monitor and adjust band tension before it is too late

DURABLE AND EASY TO USE
Lightweight cast aluminum meter with an easy to read gauge

